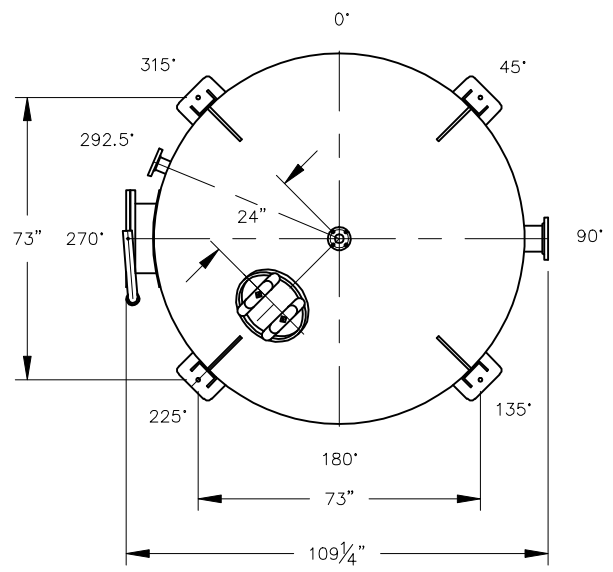


ELEVATION



PLAN

VESSEL STANDARDS

| | |
|--|--|
| VESEL MATERIALS : SA-516-70 | LIQUID DRAIN ASSEMBLY : 2" FLANGE W/ 1" NPT |
| LINING : EPOXY | MAX. MEDIA FILL : 440 FT ³ |
| EXTERIOR PAINT : EPOXY BASE W/ URETHANE TOP COAT | SHIP WT. EMPTY : 5,850 LBS |
| HEAD THICKNESS : 3/8" 2:1 ELLIPTICAL | TOTAL VOLUME OF VESSEL : 544 FT ³ |
| SHELL THICKNESS : 3/8" | MAX. OPERATING PRESSURE : 125 PSIG |
| INTERNALS : PVC | MAX. OPERATING TEMPERATURE. : 130°F |
| VESEL ACCESS : 14" x 18" ELL. MANWAY / 18" BOLTED MANWAY | |

| | | | |
|-----|---------------------------------------|----|---------|
| 2 | REVISE PRESSURE RATING FROM 75 TO 125 | JB | 12/7/09 |
| 1 | ADD 10" TO STRAIGHT SIDE | JB | 3/2/09 |
| NO. | REVISION | BY | DATE |

| | |
|---|----------|
| PROJECT | |
| CP-8000 | |
| PROJ. NO. | SALES |
| P.O. NO. | |
| THIS DRAWING AND DESIGN ARE THE PROPERTY OF TIGG CORP. AND SHALL NOT BE REPRODUCED IN WHOLE OR IN PART NOR EMPLOYED FOR ANY PURPOSE OTHER THAN SPECIFICALLY PERMITTED IN WRITING BY TIGG CORP. THIS DRAWING LOANED SUBJECT TO RETURN ON DEMAND. | |
| DRAWN BY | JB |
| DESIGN BY | BB |
| CHKD. BY | BB |
| DATE | 10/17/08 |
| SCALE | NTS |



PLAN & ELEVATION

| | | | |
|----------|--------------|------|---|
| DWG. NO. | CP-8000-1001 | REV. | 2 |
|----------|--------------|------|---|