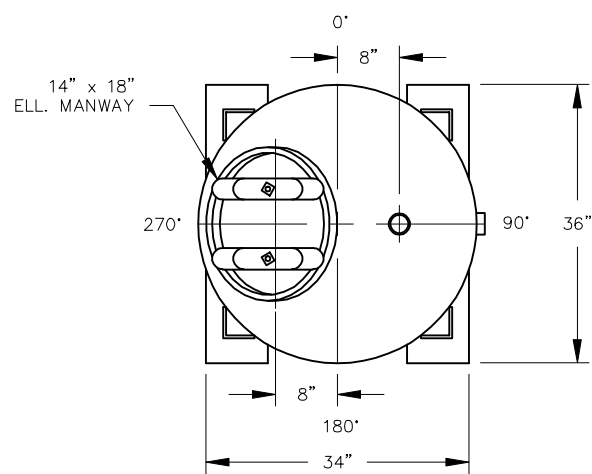


ELEVATION



PLAN

1	REPLACE LEGS WITH SKIRT	JB	7/29/08
NO.	REVISION	BY	DATE
PROJECT		CL-1000	
PROJ. NO.	SALES	P.O. NO.	
THIS DRAWING AND DESIGN ARE THE PROPERTY OF TIGG CORP. AND SHALL NOT BE REPRODUCED IN WHOLE OR IN PART, NOR EMPLOYED FOR ANY PURPOSE OTHER THAN SPECIFICALLY PERMITTED IN WRITING BY TIGG CORP. THIS DRAWING LOANED SUBJECT TO RETURN ON DEMAND.			
DRAWN BY	JB	DRAWN BY	
DESIGN BY	BB	DESIGN BY	
CHKD. BY	BB	CHKD. BY	
DATE	4/22/08	DATE	
SCALE	NTS	SCALE	
DWG. NO.		CL-1000-1001	
REV.		1	



PLAN & ELEVATION

VESSEL STANDARDS

VESSEL MATERIALS : A 36 CARBON STEEL	LIQUID DRAIN ASSEMBLY : 3/4" NPT
LINING : EPOXY	VOLUME OF VESSEL : 44 FT ³
EXTERIOR PAINT : EPOXY BASE W/ URETHANE TOP COAT	STANDARD CARBON FILL : 1000 LBS.
HEAD THICKNESS : 3/16"	SHIP WT. STD.FILL : 1860 LBS.
SHELL THICKNESS : 3/16"	CARBON TYPE : N/A
INTERNALS : PVC	MAX. OPERATING PRESSURE : 75 PSI
VESSEL ACCESS : 14" X 18" ELLIPTICAL MANWAY	MAX. OPERATING TEMP. : 130F