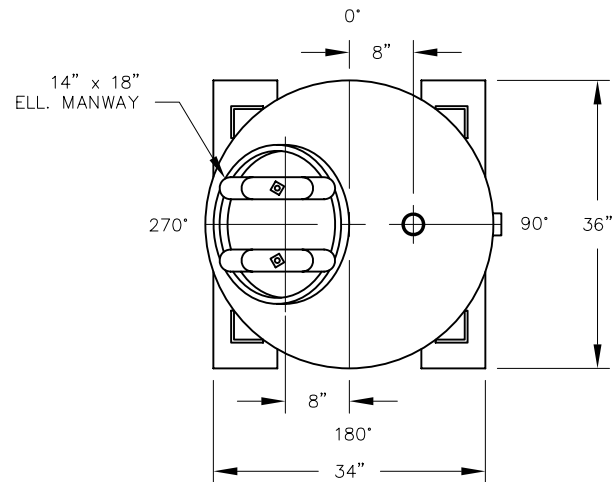


ELEVATION



PLAN

VESSEL STANDARDS

VESEL MATERIALS : A 36 CARBON STEEL	LIQUID DRAIN ASSEMBLY : 3/4" NPT
LINING : HIGH SOLIDS EPOXY	VOLUME OF VESSEL : 44 FT ³
EXTERIOR PAINT : ACRYLIC ALKID ENAMEL	STANDARD CARBON FILL : 1000 LBS.
HEAD THICKNESS : 3/16"	SHIP WT. STD.FILL : 1860 LBS.
SHELL THICKNESS : 3/16"	CARBON TYPE : N/A
INTERNALS : PVC	MAX. OPERATING PRESSURE : 75 PSI
VESEL ACCESS : 14" X 18" ELLIPTICAL MANWAY	MAX. OPERATING TEMP. : 130°F

NO.	REVISION	BY	DATE
PROJECT		CL-1000	
PROJ. NO.	SALES		
P.O. NO.			
<small>THIS DRAWING AND DESIGN ARE THE PROPERTY OF TIGG CORP. AND SHALL NOT BE REPRODUCED IN WHOLE OR IN PART, NOR EMPLOYED FOR ANY PURPOSE OTHER THAN SPECIFICALLY PERMITTED IN WRITING BY TIGG CORP. THIS DRAWING LOANED SUBJECT TO RETURN ON DEMAND.</small>			
DRAWN BY	JB		
DESIGN BY	BB		
CHKD. BY	BB		
DATE	4/22/08	DWG. NO.	CL-1000-1001
SCALE	NTS	REV.	0



PLAN & ELEVATION