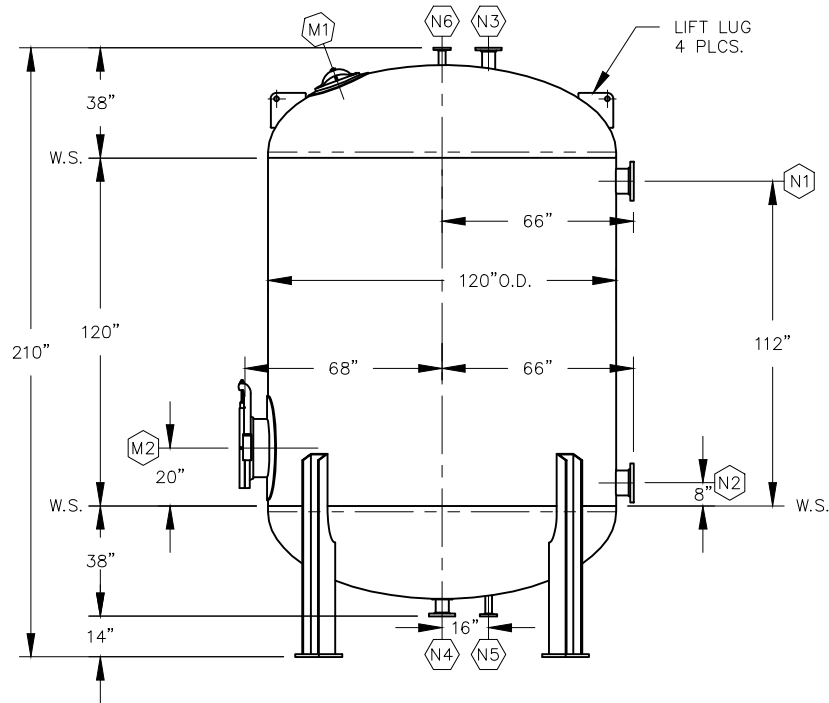
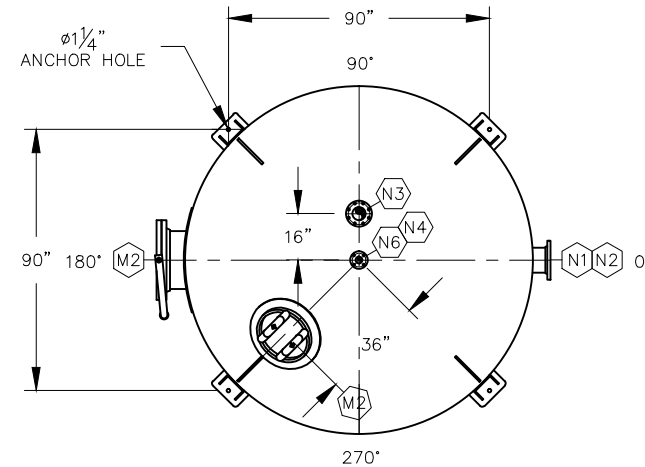


N6	AIR RELIEF	2" 150# FFSO FLANGE	TOP HEAD
N5	DRAIN	2" 150# FFSO FLANGE	BOTTOM HEAD
N4	CARBON DISCHARGE	4" 150# FFSO FLANGE	BOTTOM HEAD
N3	CARBON FILL/PRES. RELIEF	4" 150# FFSO FLANGE	TOP HEAD
N2	OUTLET	8" 150# FFSO FLANGE	SHELL
N1	INLET	8" 150# FFSO FLANGE	SHELL
M2	MANWAY	20" 150# FFSO W/ DAVIT	SHELL
M1	MANWAY	14"x18" ELL. MANWAY	TOP HEAD
MARK	SERVICE	DESCRIPTION	LOCATION
NOZZLE SCHEDULE			



**ELEVATION**



**PLAN**

1		REVISE FLANGE TYPE & LINING		JB	7/5/11
NO.		REVISION		BY	DATE
PROJECT					
CP-20K-10					
PROJ. NO.		SALES			
P.O. NO.					
THIS DRAWING AND DESIGN ARE THE PROPERTY OF TIGG CORP. AND SHALL NOT BE REPRODUCED IN WHOLE OR IN PART, NOR EMPLOYED FOR ANY PURPOSE OTHER THAN SPECIFICALLY PERMITTED IN WRITING BY TIGG CORP. THIS DRAWING LOANED SUBJECT TO RETURN ON DEMAND.					
DRAWN BY		JB			
DESIGN BY		BB			
CHKD. BY		BB			
DATE		2/28/11			
SCALE		NTS			
PLAN & ELEVATION					
CP-20K-10-1001					REV. 1

## VESSEL STANDARDS

VESSEL MATERIALS : SA-516-70	VESSEL ACCESS : 20" BOLTED MANWAY W/ DAVIT
LINING : NSF APPROVED VINYL ESTER	LIQUID DRAIN ASSEMBLY : 2" 150# FFSO FLANGE
EXTERIOR PAINT : EPOXY BASE / URETHANE TOP COAT	TOTAL VOLUME : 1055 FT <sup>3</sup>
HEAD THICKNESS : 1/2" NOM.	SHIP WT. EMPTY : 11783 LBS
SHELL THICKNESS : 1/2" NOM.	MAX. OPERATING PRESSURE : 125 PSIG/-15 PSIG (VAC.)
INTERNALS : PVC	MAX. OPERATING TEMPERATURE. : 150°F



PLAN & ELEVATION

CP-20K-10-1001

REV. 1