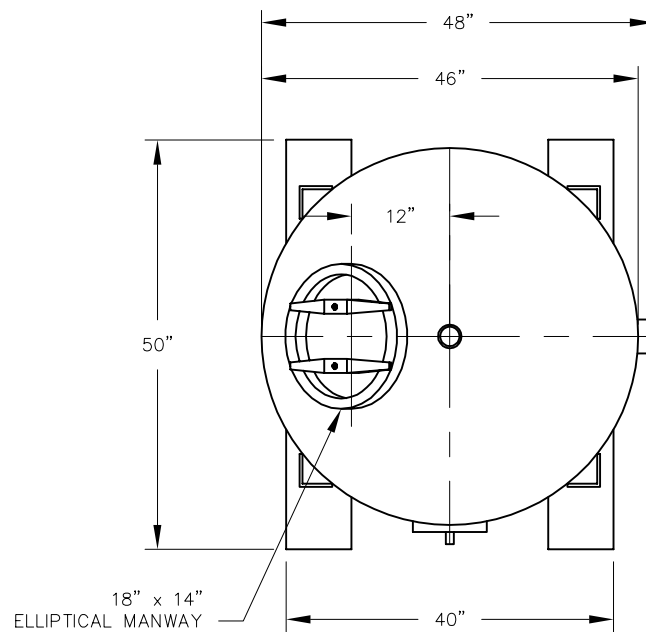


ELEVATION



PLAN

VESSEL STANDARDS

VESEL MATERIALS : 516-70 CARBON STEEL	ADSORBENT OUTLET ASSEMBLY : 18" X 14" ELLIPTICAL MANWAY
LINING : HIGH SOLIDS EPOXY	MAX. MEDIA FILL : 60 FT. ³
EXTERIOR PAINT : ACRYLIC ALKYD ENAMEL	EMPTY WT. : 1200 LBS
HEAD THICKNESS : 3/16" ASME CODE F & D	MAX. OPERATING PRESSURE : 75 PSIG
SHELL THICKNESS : 3/16"	MAX. OPERATING TEMP. : 130°F
INTERNALS : PVC PIPE	

NO.	REVISION	BY	DATE
PROJECT		CP-1000	
PROJ. NO.	SALES		
<small>THIS DRAWING AND DESIGN ARE THE PROPERTY OF TIGG CORP. AND SHALL NOT BE REPRODUCED IN WHOLE OR IN PART FOR ANY PURPOSE OTHER THAN SPECIFICALLY PERMITTED IN WRITING BY TIGG CORP. THIS DRAWING LOANED SUBJECT TO RETURN ON DEMAND.</small>			
DRAWN BY	JB		
DESIGN BY	BB		
CHKD. BY	BB		
DATE	11/19/05	DWG. NO.	CP-1000-1001
SCALE	NTS	REV.	0



PLAN & ELEVATION