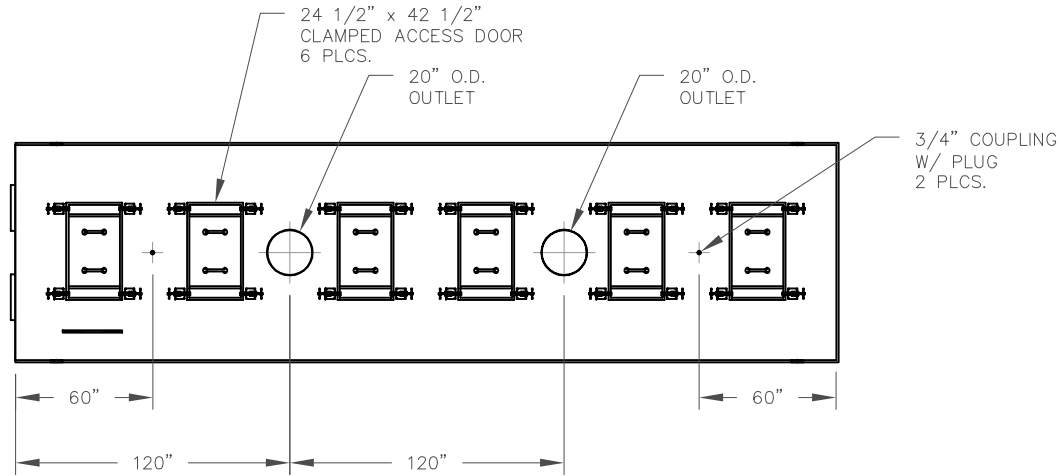
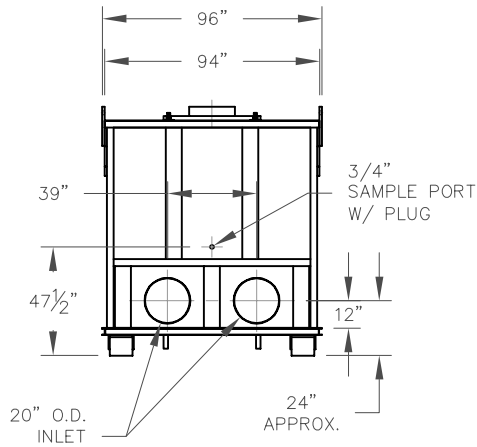


NOTES: TIGG CORPORATION RESERVES THE RIGHT TO CHANGE ANY AND ALL DIMENSIONS—AND DESIGNS OVERALL OUT TO OUT DIMENSIONS AND INLET/OUTLET LOCATIONS ARE FIXED.

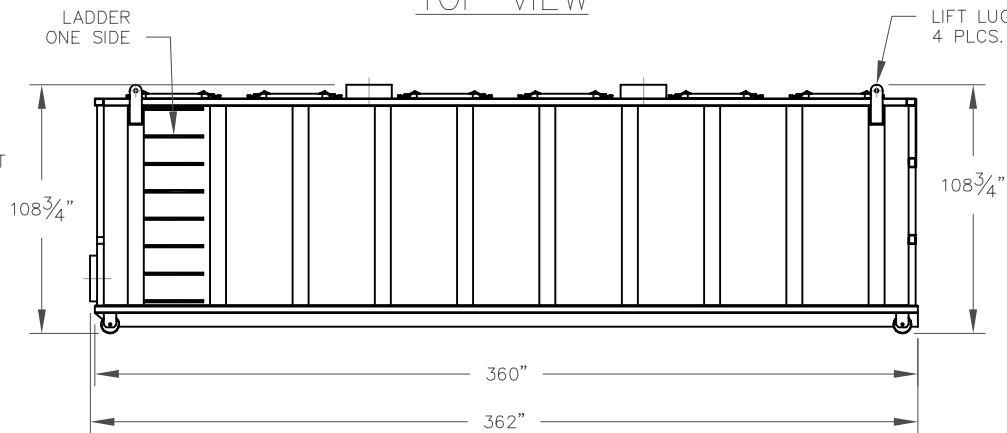
CONTAMINATED AIR SHALL ENTER UNIT THROUGH BOTH INLETS AND MUST EXIT USING BOTH OUTLETS.



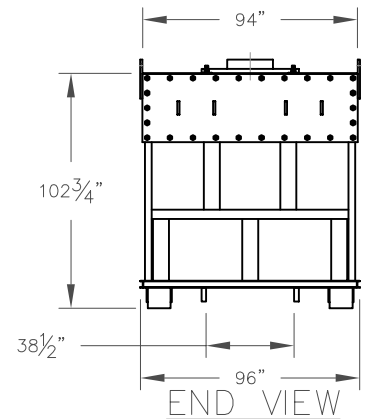
TOP VIEW



FRONT VIEW



SIDE VIEW



END VIEW

6	CHANGE PRESSURE RATING TO 1 PSI	JB	3/8/07
5	REVISE BOLTED ACCESS DOOR	JB	7/14/04
4	REVISE STANDARD FILL	JB	5/27/04
3	REVISE TO FABRICATORS SPECS.	JB	5/13/04
2	REVISE STANDARDS	JB	2/5/04
1	REVISE STANDARDS	JB	6/10/03
NO.	REVISION	BY	DATE

VESSEL STANDARDS

VESSEL MATERIALS : CARBON STEEL	BED VOLUME STD/MAX : 640 FT ³ / 780 FT ³
LINING : HIGH SOLIDS EPOXY	STD / MAX CARBON FILL : 16,000 LBS/20,000 LBS
EXTERIOR PAINT : HIGH SOLIDS EPOXY W/ URETHANE TOP COAT	SHIP WT. EMPTY/MAX.FILL : 15,000 LBS/35,000 LBS
WALL THICKNESS : 12 GAUGE STD.	CARBON TYPE : TIGG 5CP-4MM VAPOR PHASE
FLOOR THICKNESS : 3/16" STD.	MAX. OPERATING PRESSURE : 1 PSI
INTERNALS : CARBON STEEL & POLYETHYLENE	MAX. OPERATING TEMP. : 140°F
ADSORBENT OUTLET ASSEMBLY : 24" X 42" CLAMPED ACCESS DOORS AND 86" X 22" BOLTED DOOR	

PROJECT	
PROJ. NO.	SALES
P.O. NO.	
THIS DRAWING AND DESIGN ARE THE PROPERTY OF TIGG CORP. AND SHALL NOT BE REPRODUCED IN WHOLE OR IN PART, NOR EMPLOYED FOR ANY PURPOSE OTHER THAN SPECIFICALLY PERMITTED IN WRITING BY TIGG CORP. THIS DRAWING LOANED, SUBJECT TO RETURN ON DEMAND.	
DRAWN BY	JB
DESIGN BY	BL
CHKD. BY	BL
DATE	2/6/04
SCALE	NTS



TIGG
corporation

NB-20-1001

DWG. NO. NB-20-1001 REV. 5