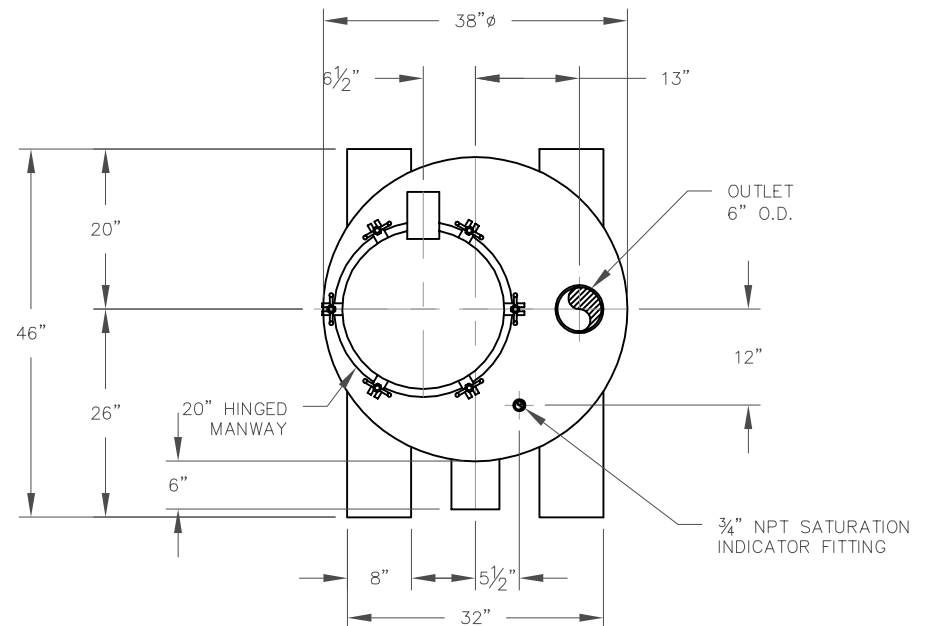


ELEVATION




PLAN

VESSEL STANDARDS

VESSEL MATERIALS : A36 CARBON STEEL	LIQUID DRAIN ASSEMBLY : 1" HDPE PLUG
LINING : HIGH SOLIDS EPOXY	VOLUME OF VESSEL : 30 FT ³ (NOT INCLUDING TOP HEAD)
EXTERIOR PAINT : ACRYLIC ALKYD ENAMEL	STANDARD / MAX. CARBON FILL : 650 LBS / 700 LBS
HEAD THICKNESS : 3/16"	SHIP WT. STD.FILL : 1500 LBS
SHELL THICKNESS : 3/16"	CARBON TYPE : TIGG 4MM PELLET VAPOR PHASE
INTERNALS : PLENUM	MAX. OPERATING PRESSURE : 15 PSIG
ADSORBENT OUTLET ASSEMBLY : 20" MANWAY	MAX. OPERATING TEMP. : 180°F

5	CHANGE MANWAY TO HINGED STYLE	JB	8/29/06
4	REVISE CARBON FILL	JB	1/20/04
3	REMOVE VENT	JB	5/14/03
2	CHANGE EXTERIOR PAINT	JB	5/7/03
1	TITLE BLOCK	JB	1/10/03
NO.	REVISION	BY	DATE

PROJECT		
PROJ. NO.	SALES	
P.O. NO.		<p>N-750PDB</p> <p>DWG. NO. N-750PDB-1001</p> <p>REV. 5</p>
<small>THIS DRAWING AND DESIGN ARE THE PROPERTY OF TIGG CORP. AND SHALL NOT BE REPRODUCED IN WHOLE OR IN PART, NOR EMPLOYED FOR ANY PURPOSE OTHER THAN SPECIFICALLY PERMITTED IN WRITING BY TIGG CORP. THIS DRAWING LOANED, SUBJECT TO RETURN ON DEMAND.</small>		
DRAWN BY	JB	
DESIGN BY	BL	
CHKD. BY	BL	
DATE	9/24/02	
SCALE	NTS	