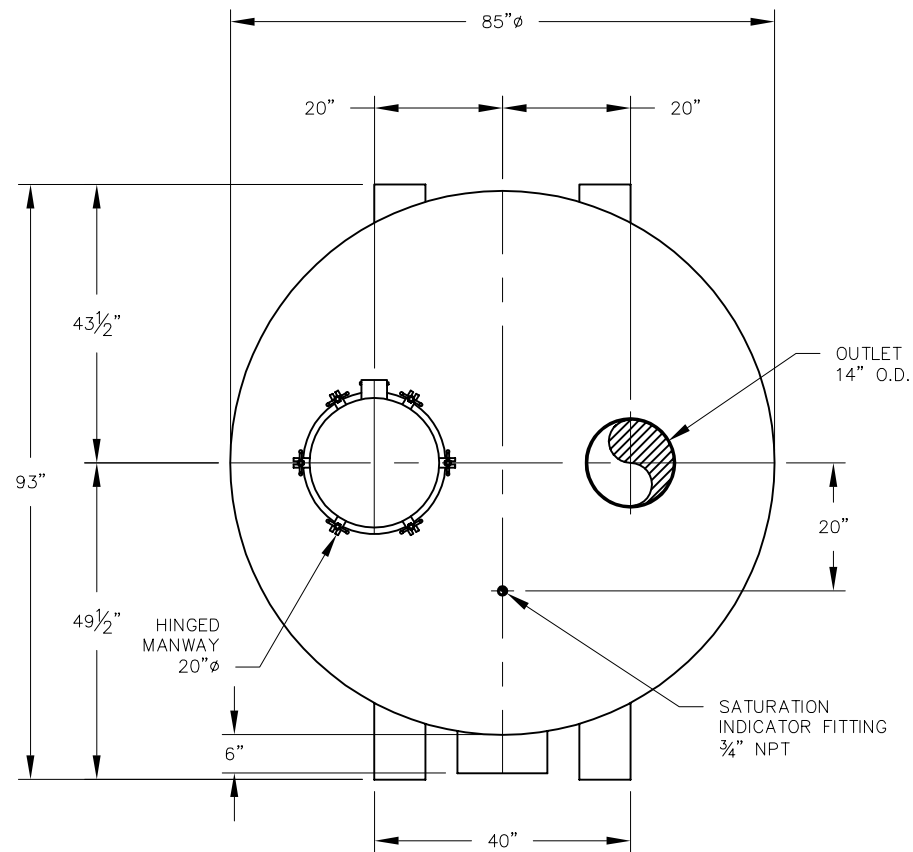


ELEVATION



PLAN

## VESSEL STANDARDS

VESEL MATERIALS : A36 CARBON STEEL	LIQUID DRAIN ASSEMBLY : 1" HDPE PLUG
LINING : HIGH SOLIDS EPOXY	VOLUME OF VESSEL : 211 FT <sup>3</sup> (NOT INCLUDING TOP HEAD)
EXTERIOR PAINT : ACRYLIC ALKYD ENAMEL	STANDARD/MAX CARBON FILL : 3200 LBS / 5200 LBS)
HEAD THICKNESS : 3/16"	SHIP WT. STD.FILL : 5935 LBS
BOTTOM PLATE THICKNESS : 1/4"	CARBON TYPE : TIGG 4MM PELLET VAPOR PHASE
INTERNALS : PLENUM	MAX. OPERATING PRESSURE : 15 PSIG
ADSORBENT OUTLET ASSEMBLY : 20" MANWAY	MAX. OPERATING TEMP. : 180°F

NO.	REVISION	BY	DATE
PROJECT			
PROJ. NO.	SALES		
P.O. NO.			
THIS DRAWING AND DESIGN ARE THE PROPERTY OF TIGG CORP. AND SHALL NOT BE REPRODUCED IN WHOLE OR IN PART, NOR EMPLOYED FOR ANY PURPOSE OTHER THAN SPECIFICALLY PERMITTED IN WRITING BY TIGG CORP. THIS DRAWING LOANED SUBJECT TO RETURN ON DEMAND.			
DRAWN BY	JB		
DESIGN BY	BL		
CHKD. BY	BL		
DATE	12/16/02	DWG. NO.	N-4000PDB-1001
SCALE	NTS	REV.	0



N-4000-PDB

N-4000PDB-1001